

WEST  
MIDLANDS  
INTERCHANGE

M6/JCT.12

# COMMUNITY LIAISON GROUP

8 November 2023

# AGENDA



Construction  
update



Highways update



Planning update



Community  
fund update



Social value  
update



AOB,  
questions and  
next steps



Construction update

# Construction update

- Construction commenced July 2023
- Current works – Phase 1
  - Earthworks, drainage and pond construction to 50 series, 20 series and partial earthworks to 3010.
  - Hard landscaping to community parks on Croft Lane and Calf Heath.
  - Property demolition.
  - Ecological mitigation.

## PROGRESS

- 50 series plots:
  - Nearing completion of earthworks.
  - Drainage and pond construction ongoing.
  - Tree fencing and protection complete.
  - Bird and bat boxes installed.
- 20 series:
  - New Badger sett constructed in Croft Lane community park, migrating badgers from existing sett.
- 3010:
  - Works ongoing to complete plateaus with import of material from 50 series.
- Property demolition ongoing to Vicarage Road and Straight Mile.



# Construction update

## UPCOMING WORKS

- 50 Series:
  - Continuation and completion of Earthworks and drainage to 50 series.
  - Earthworks retaining walls.
  - Hard landscaping to Calf Heath Community Park
  - Hedge Trans locations
  - Installation of plant crossing
- 20 Series:
  - Earthworks and drainage to 20 series to start Q1 2024.
  - Earthworks retaining walls.
  - 11kv electricity diversions.
- 3010:
  - Ongoing Earthworks.
- Drainage installation across Vicarage Road and Straight Mile.
- Completion of property demolitions
- <https://www.westmidlandsinterchange.co.uk/construction-activity/>.





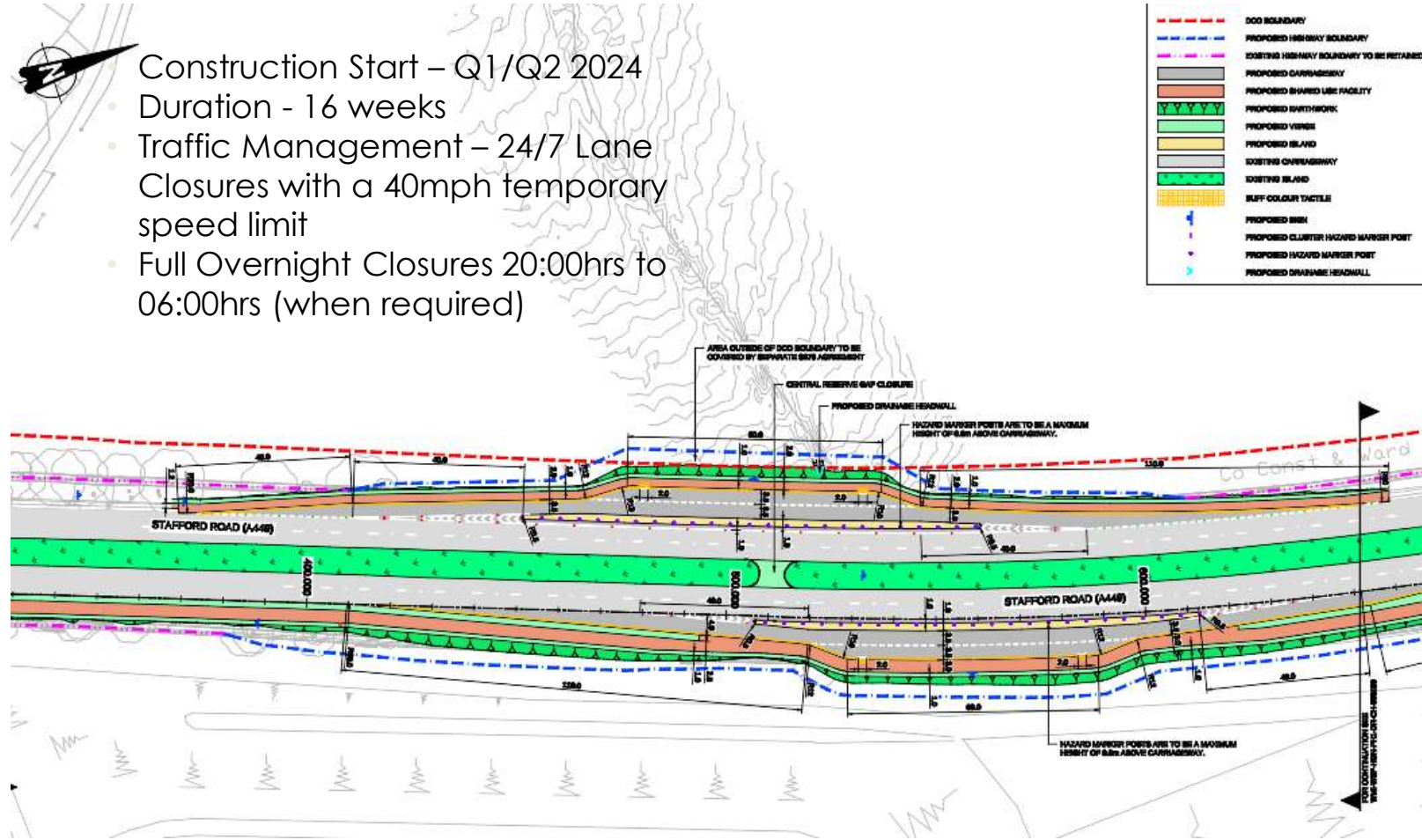
# Highways update

# A449 Laybys

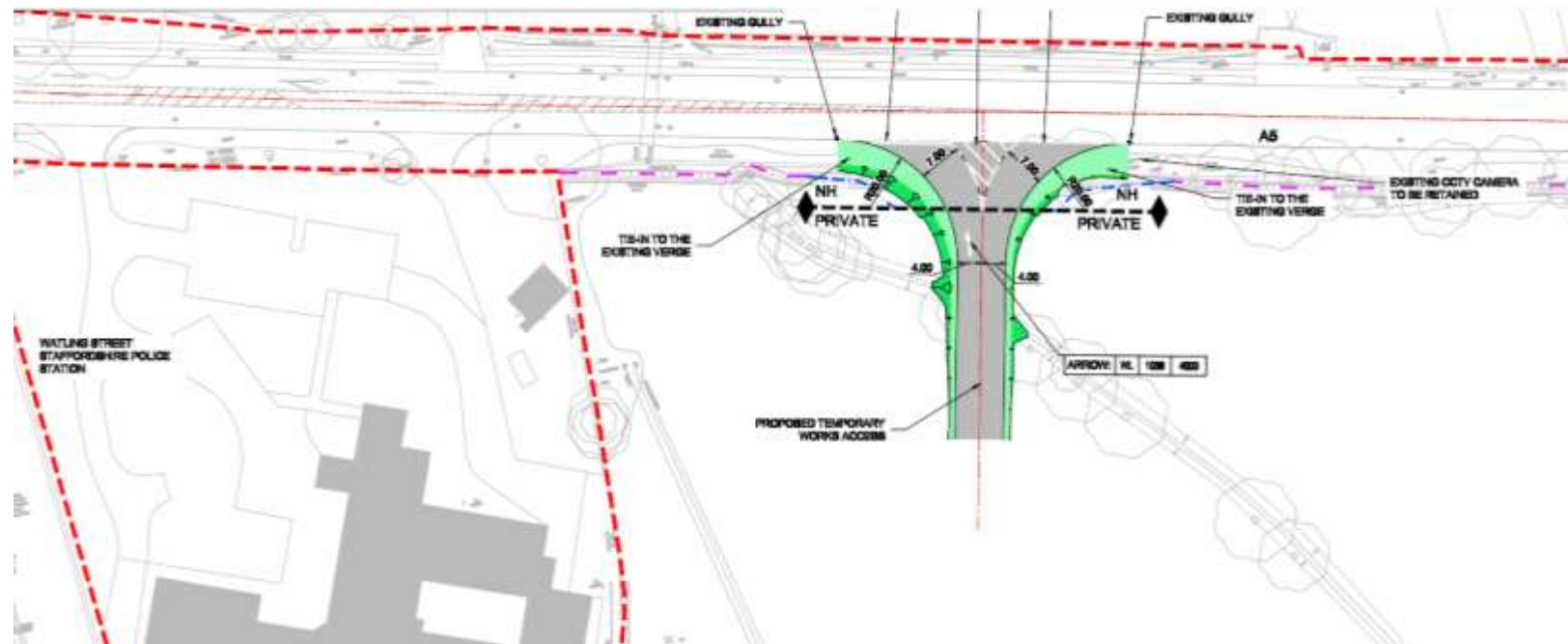


Construction Start – Q1/Q2 2024

- Duration - 16 weeks
- Traffic Management – 24/7 Lane Closures with a 40mph temporary speed limit
- Full Overnight Closures 20:00hrs to 06:00hrs (when required)



# A5 Temporary Access



- Construction Start – Q1 2024
- Duration - 8 weeks
- Traffic Management –
- Overnight two-way lights for the construction.
- 40mph temporary speed limit during its operation
- Overnight two-way lights for the construction.
- Access to be in operation for approx. 6 months



# Temporary Plant Crossing

- The majority of material that is being excavated from the 50 series plots located between Vicarage Road and Straight Mile is required to be moved to construct the 30 series plots north of Vicarage Road.
- 
- The intention is to install a plant crossing on Vicarage Road that will be controlled by traffic lights operating on a sensor. The lights will be a two way set up and effectively act as a crossroad for plant that needs to move between plots. This will minimise haulage movements along Vicarage Road for construction traffic and allow a direct route between plots for material haul.
- 
- The intention is to start works on this crossing in the next few weeks and have it operational by early December, albeit earthworks will slow down naturally within this period due to reduced capability during the winter period.
- 

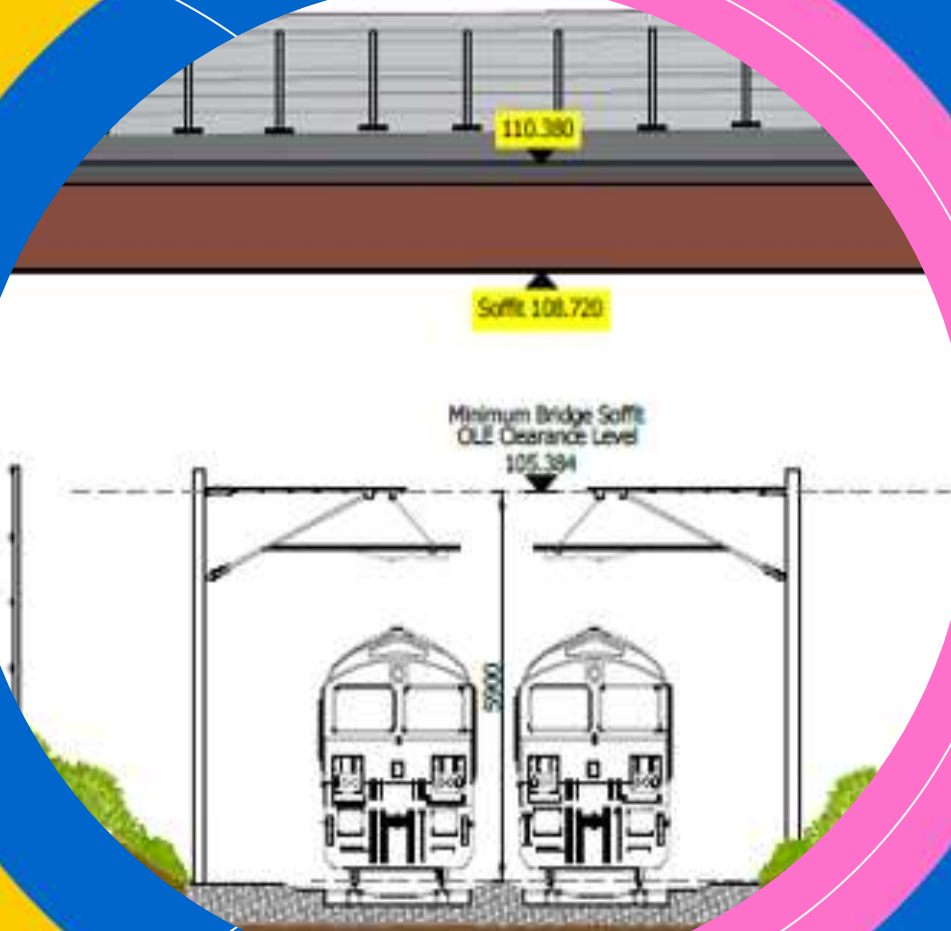


# Planning update

---

## Roads and Bridges NMC

- **Approved by Secretary of State for Transport on 25 October 2023** – enables detailed design submissions of road infrastructure to progress.
- Changes to approved bridge spans and heights.
- Changes to approved levels of new internal site roads.
- Changes to the terminal track layouts.
- Changes to approved improvements at Straight Mile / Woodlands Lane / Kings Road junction.



# Planning update

---

## Recent progress on submissions and approvals

- Phase 3 Earthworks and associated surface water drainage (West of West Coast Mainline railway) pending determination.
- Application form for Community Fund drafted with SSDC.
- Archaeological mitigation works approved and in process of preparing archive for deposition to The Potteries Museum and Art Gallery.
- Vicarage Road plant crossing between WMI north and south of Vicarage Road approved.

# Planning update

---

## Main upcoming submissions

- Phase 1 Green Infrastructure, including Community Parks.
- Main road infrastructure design packages:
  - Replacement A449 Laybys;
  - Temporary construction access off A5 into Plot 2010 adjacent to Watling Street Police Station;
  - Vicarage Road Access Roundabout / Straight Mile / Woodlands Lane / Kings Road works.

# Social Value update – Jobs & Training (Delivered)

- Staffordshire Jobs
  - Web page now live
  - Sign up capability is coming soon
- Walsall College – Enrichment Programme
  - 2 days / 16 Students
- Careers Fairs
  - Cannock Chase High School
  - Stafford University
  - University of Wolverhampton
- Catering role live until 15 Nov
- STEM returner
  - Local female participant helping get back into engineering after career break



# Social Value update - Jobs & Training (Development)

- Employment and Skills Partnership Group created
- Work Placements
  - Two placements scheduled to gain experience at WMI mid November.
- 3 Apprentices, a Year in Industry student, and a Graduate onsite.
- Training course for Roller Drivers (Earthworks)
  - referrals coming from DWP
  - interviews taking place soon
- Chase Terrace Academy Cannock
  - Supporting Year 12 students with mock interviews.
- Supported accommodation engagement
  - increase in numbers of children in care / 27% being aged 15-18 last year



## Social Value update – Environment (Development)

- Female inclusivity and accessibility of the park
  - 88% of teenagers using parks are boys
  - Include girls into design
  - Social seating areas / swings / gym
- Local sculptor to use recycled timber
- Environmental theme
- Exploring volunteering opportunities with Kingswood Trust
- 28 bird boxes installed around the community parks (barn owls / blue tits / robins / kestrels)

# Community fund update

---

- We are working closely with South Staffordshire District Council to get this running
- Information will be made available on the WMI website
- £60,000 will be made available for the first round of funding, to be split amongst numerous projects



# AOB and Next Steps