

WEST
MIDLANDS
INTERCHANGE

M6/JCT.12

COMMUNITY LIAISON GROUP

28 February 2024

AGENDA



Construction
update



Highways update



Planning update



Social value
update



Community
fund update



Community
parks update



Construction update

Construction update

CURRENT WORKS – PHASE 1

- Earthworks, drainage and pond construction to 50 series, 20 series and partial earthworks to 3010.
- Hard landscaping to community parks on Croft Lane and Calf Heath.
- Property demolition.
- Ecological mitigation.

PROGRESS

- 50 series plots:
 - Nearing completion of earthworks.
 - Drainage and pond construction ongoing.
 - Installation of water cleansing equipment to discharge water off site via the canal.
- 20 series:
 - Tree protection fencing installed.
- 3010:
 - Works ongoing to complete plateaus with import of material from 50 series.
- Property demolitions complete to Vicarage Road and Straight Mile.



Construction update

UPCOMING WORKS

- 50 Series:
 - Continuation and completion of Earthworks and drainage.
 - Earthworks retaining walls and screening bunds.
 - Hard landscaping to Calf Heath Community Park.
 - Hedge Trans locations.
 - Surface water discharge.
- 3010 – completion of Earthworks and drainage.
- 20 Series:
 - Installation of semi permanent access direct from the A5.
 - Earthworks and drainage to 20 series to start Q1/Q2 2024.
 - Earthworks retaining walls and screening bunds.
 - 11kv electricity diversions, divert over heads underground.
- Drainage installation across Vicarage Road and Straight Mile.
- Site wide land management prior to bird nesting season.



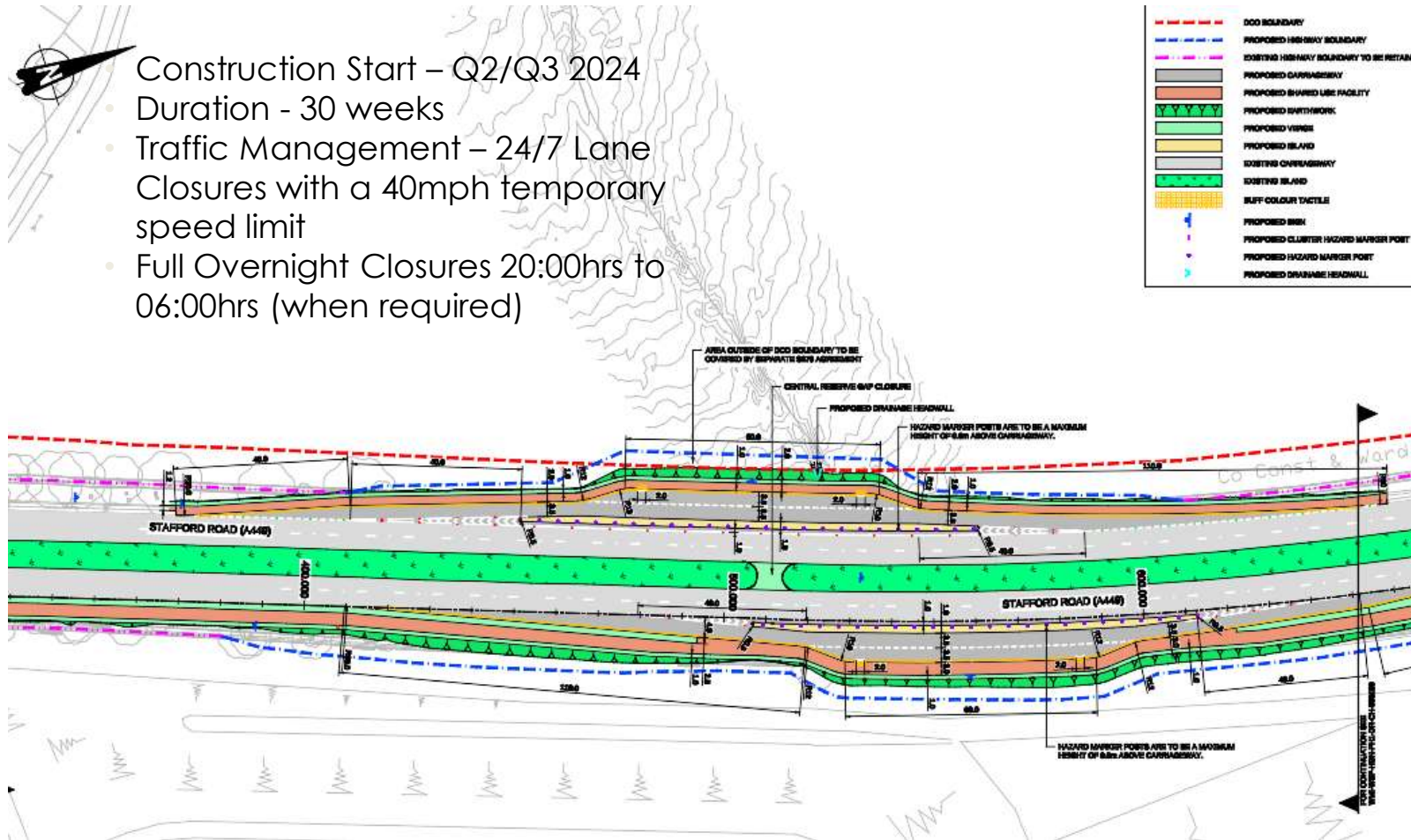


Highways update

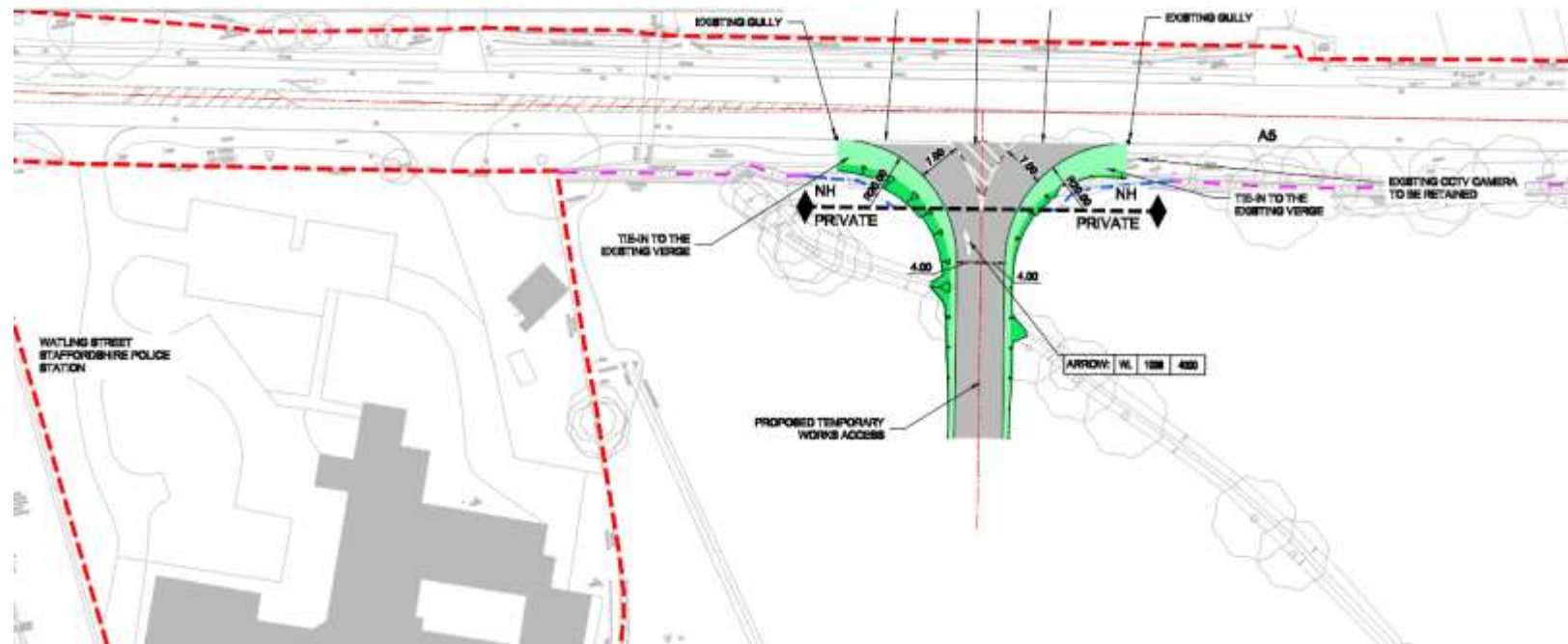
A449 Laybys



- Construction Start – Q2/Q3 2024
- Duration - 30 weeks
- Traffic Management – 24/7 Lane Closures with a 40mph temporary speed limit
- Full Overnight Closures 20:00hrs to 06:00hrs (when required)



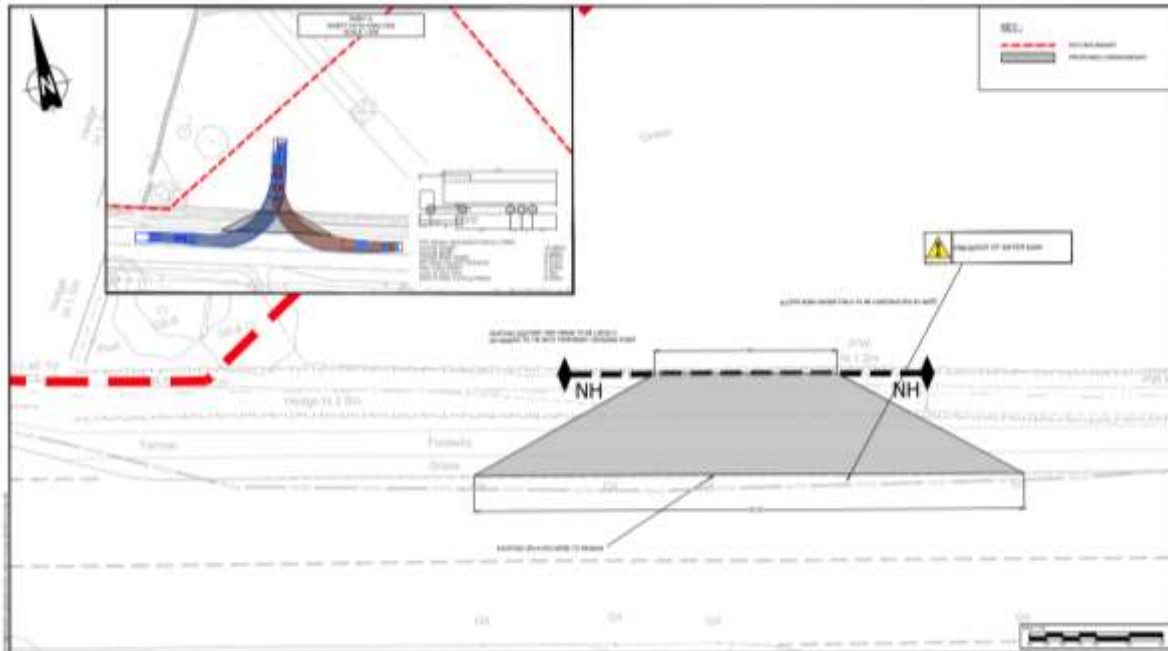
A5 Temporary Access



- Construction Start – Q2 2024
- Duration - 8 weeks
- Traffic Management –
- Overnight two-way lights for the construction.
- 40mph temporary speed limit during its operation
- Overnight two-way lights for the construction.
- Access to be in operation for approx. 6 months

- Discussions with SCC regarding a potential new temporary access off Vicarage Road for the construction of the National Grid 132kv Pylon
- Temporary 40/30mph speed limit on Vicarage Road and Straight Mile – subject to SCC approval.

A5 NGED Temporary Access



- Construction Start – March 2024
- Duration - 2 weeks
- Traffic Management –
- Overnight two-way lights for the construction.
- 40mph temporary speed limit during its operation
- A5 Eastbound layby to be temporary closed
- Full overnight closure of the A5 will be required in May 2024 for the installation of the safety netting across the A5 carriageway,
- Access to be in operation for approx. 8 weeks



Planning update

Planning update

Current Planning Submissions Pending Determination

- Changes to currently approved Surface Water Drainage Strategy details for Catchments D and E
- Updated Phase 4 DCEMP (reflecting Vicarage Road temporary welfare facility and South Tower pylon temporary construction access)
- Updated DCTMP including construction traffic routing and signage – with SCC for agreement
- Variation to Phasing of A5 Roundabout to allow offline works to roundabout in advance of opening of the new A449 laybys – with National Highways for agreement

Planning update

Current Planning Submissions Pending Determination

- Agricultural Bridge (Bridge no. 64 / Footpath 29 footbridge over the WCML) demolition and tree removal works
- Creation of North Tower pylon temporary construction access
- Changes to tree and hedgerow removals in Phase 2a and Phase 4 works areas (due to changes to earthworks design and detailed drainage requirements)

Planning update

Recently decided applications

- Vicarage Road hedgerow section removal for creation of construction plant crossing
- Surface Water Drainage Strategy details for Catchments A and B
- A5 Temporary Construction Access and associated tree removals (to allow construction traffic and machinery access to carry out earthworks on land between the canal and the WCML)

Planning update

Main upcoming submissions

- A449 Laybys
- Changes to the currently approved Phase 2a and Phase 4 earthworks strategy, altering certain approved finished heights, bund alignments and the siting / shape of water attenuation basins
- Phase 1 GI detailed design (including Community Parks)
- Estate Management Office



Social value update

Social Value update – Jobs & Training (Delivered)



- Staffordshire Jobs
 - Introduction of supply chain and agencies to brokerage.
 - WMI specific web page being developed.
 - Sign up capability is coming soon
- Liaising with the Careers and Enterprise Company to promote opportunities to local schools.
- Careers Fairs
 - Walton High School
 - Codsall Community High School
- Employer talks at Walsall College
- 4 Apprentices, a Year in Industry student and Graduate onsite.
- Industry Placements
 - Three T-level (Design, Surveying and Planning) placement students on site gaining experience at WMI.
- Catering role live until 29 Feb

Social Value update - Jobs & Training (Development)

- Liaising with Woodsaints, Wolverhampton
- Training course for Roller Drivers (Earthworks) -
 - Further referrals required.
- Further t-level placements being supported.
- College engagement including:
 - South Staffordshire College
 - Thomas Telford UTC

Upcoming activities:

- Norton Canes School – Insight day
- Rural Enterprise Academy – Careers Fair
- University of Wolverhampton – Site Visits for Civil Engineering students
- South Staffordshire College – Employer talks
- Codsall High School – mock interviews
- Careers and Enterprise Advisor CPD day



Community fund update

Community fund update

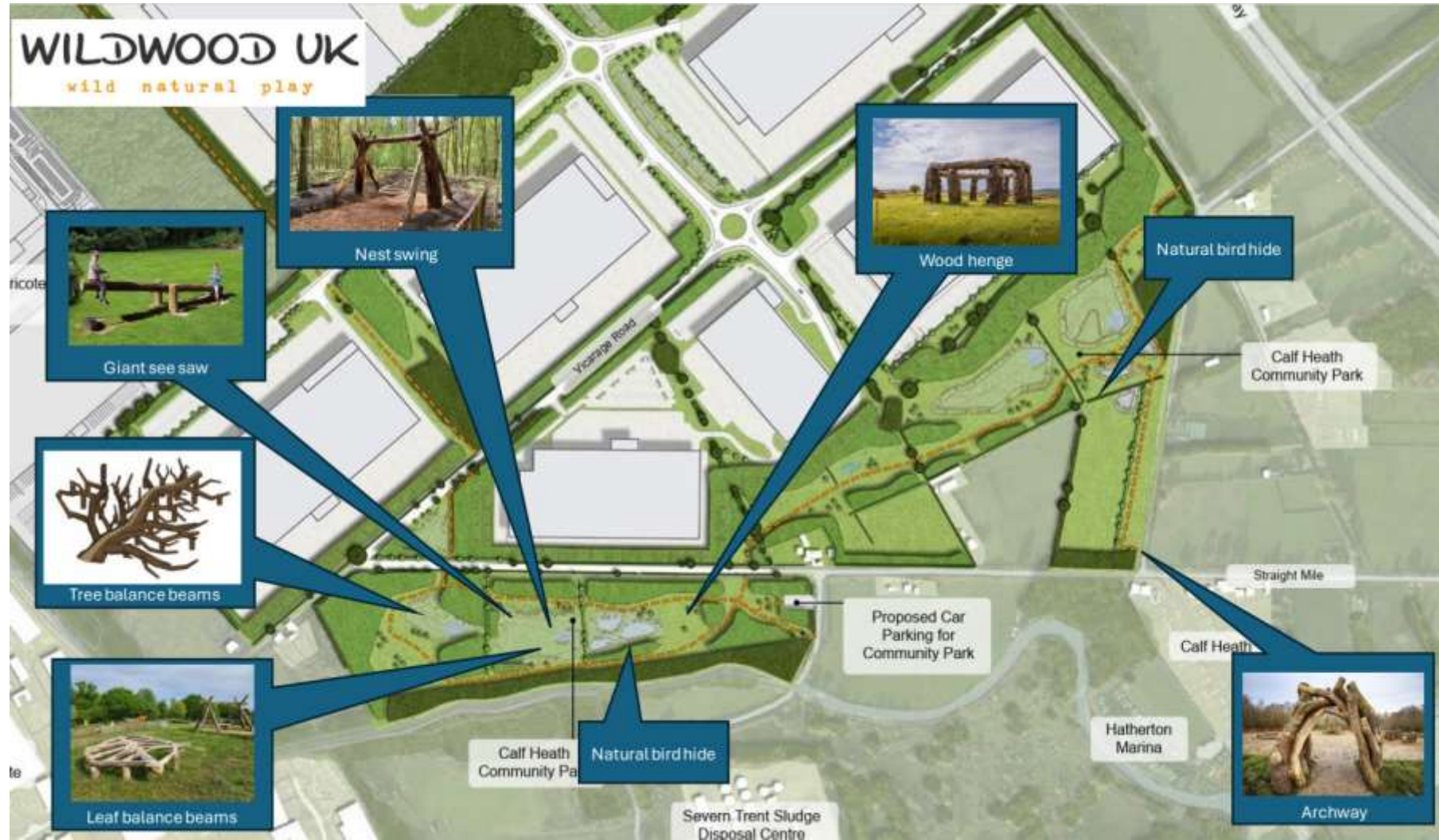
5

- The community fund launched on the 7th February
- Information is available on the WMI website, <https://www.sstaffs.gov.uk/communities/community-wellbeing-funding>.
- £65,000 will be made available for the first round of funding, to be split amongst numerous projects, including
- The types of projects that will be potentially eligible for grants are:
 - Schemes to enhance public spaces and facilities in the vicinity of the WMI development, within 3 miles of the site.
 - Initiatives to maximise public use of the community parks to be provided at WMI.
 - Other community schemes and initiatives agreed by the council and the WMI developer as helping to mitigate the impacts of the WMI development.



Community parks update

Community parks update



Community parks update – black poplars



AOB and Next Steps